

Westly 1

- 3 Bedrooms
- 3.5 Baths
- First Floor 1,396 SF
- Second Floor 900 SF
- Porches 574 SF



**All plans and dimensions may vary
Parking options may vary*



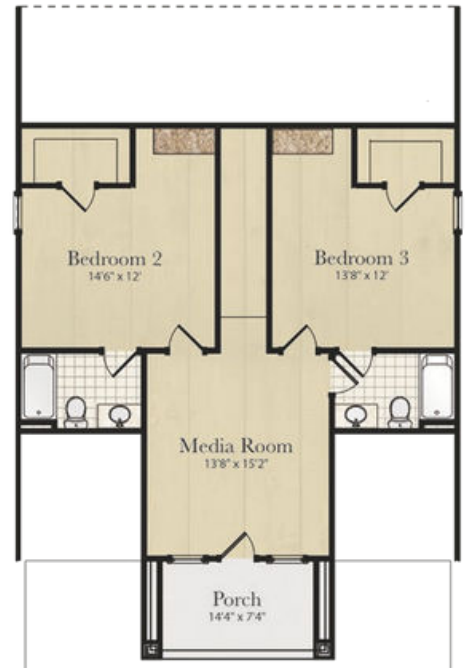
GIVE US A CALL AT 334-657-9253



Carport Option



1st Floor



2nd Floor



334.272.3200
TheWatersAL.com

