

# Baldwin 8

- 5 Bedrooms
- 3 Baths
- First Floor 1,964 SF
- Second Floor 764 SF
- Porches 500 SF



**Carport Option**

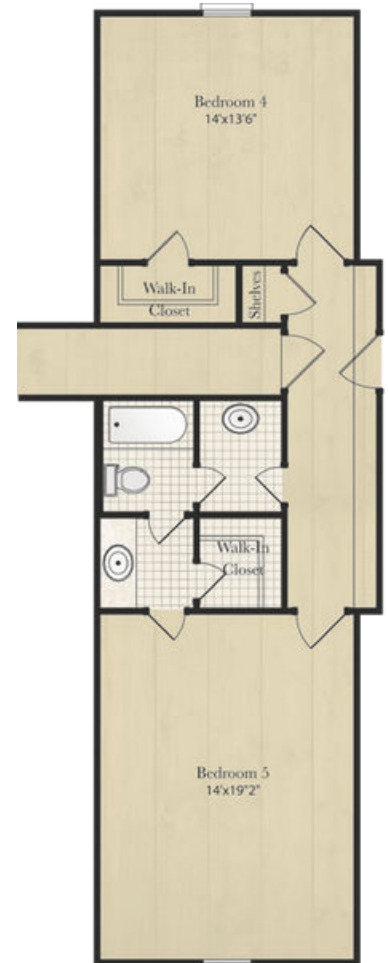
*\*All plans and dimensions may vary  
Parking options may vary*



GIVE US A CALL AT 334-657-9253



**1st Floor**



**2nd Floor**



THE WATERS

334.272.3200  
TheWatersAL.com

