

The Watersview

- 4 Bedrooms
- 2.5 Baths
- First Floor 1,154 SF
- Second Floor 1,096 SF
- Porches 588 SF



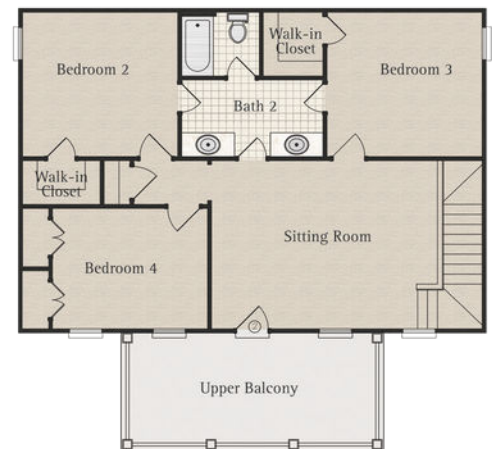
**All plans and dimensions may vary
Parking options may vary*



GIVE US A CALL AT 334-657-9253



1st Floor



2nd Floor



334.272.3200
TheWatersAL.com

